

## The Female Form as 'Art'!!

story and pictures by Angela Polglaze



Sculpture carved by Simon O'Rourke, Wales UK, 1st place fairy created over one and a half days in September at the English Open, Tatton Park England

The female form as a subject for sculpture has been prevalent throughout the history of art, dating all the way back to the primeval beginning of civilized man. The Venus of Willendorf, which is believed to be up to 28,000 years old, could possibly be the earliest existing example of sculpture born of the mind's eye, and shaped by the language of human hands. Measuring in at approximately 13 cm in length (about 5 inches), experts and theorists alike agree that the 'Venus' is a fertility symbol, and with no ability to stand freely, she could possibly have been designed to be held during the very act of childbirth.



Venus of Willendorf

Regardless of weather the intention of any figurative form created is to serve the purpose of a fertility symbol, or an object of worship, or as an object purely of desire and sensuousness (or possibly controversy), or even as a means to sell anything from chocolate biscuits to holidays in exotic locations ... or simply to serve as an extravagant squeeze ball for expectant mothers ... the female form in sculpture has always held a special place in the world of art and continues to do so to this day.

To create a pleasing female form while carving with a chainsaw is notoriously difficult. Hands are hard, faces pose enormous challenge, proportion is important, and the breasts are always a point of contention. And yet, over the years, many practitioners of our relatively young art form, generally referred to as 'chainsaw carving', have continued in this proud tradition of creating the female form as 'Art', often with beautiful results. 2007 was no exception and depicted here are just a small selection of some pieces created around the world during the 2007 international carving circuit. And remember, all of these art works were created while under the duress of a time limit, in

(Continued on page 4)

### Inside this issue:

Letter from the Editor	2
Message from Our President	2
The Alphabet by Mike McVay	3
The Role of the Judge by Susan Miller	6
Upcoming Events	7
Tales of an International Starving Artist by Bruce Thor	8

## Message from our President

## Letter from the Editor by Jack McEntire

It is quite gratifying to see how many people wish the CCSG well, and are willing to contribute to the greater good of the group. After our November meeting it was clear just how successful the year has been and how promising the new year is. One of the things that has always attracted me to the community of carvers is that you are all so welcoming. You're almost universally the most sharing, helpful, positive group of people with which I've ever been involved. There's something special about being a chainsaw carver. As Steve would say, we're almost tribal.

We're holding elections for officers in April. We are always looking for ways to increase carver participation in guild functions, so anyone who wishes to participate should feel free to nominate themselves or someone else after confirming their willingness to serve. The list so far is: President-Steve Backus, Vice-President-Bruce Thor. All nominations will be posted in the next newsletter and the election will be held both online and by mail in ballot from the March-April newsletter.

In our last issue we called for carvers to fill out an opinion poll concerning many aspects of a contest/get together. We tried to explain our reasoning for doing it on an anonymous basis but it has raised quite a bit of debate on some of the online forums. However, our opinion is still that, in order to gain information that is truly useful for the carvers the poll must be done anonymously. Undoubtedly some people would be willing to tell Santa Claus to his face that he doesn't give enough, most however, will be less willing to criticize a giving host, which is just what most event coordinators are. So, if you haven't filled out the questionnaire yet do so now. The more responses we get the better the information will be.

One final point, for many of you dues are coming up again. What we're going to do is offer FREE 2008 membership dues for those that choose to get their newsletter online. If you want a hard copy and/or a bumper sticker then the dues will remain what they have been since 1993: \$20 domestic, \$25 international. Donations, of course are always welcome and even essential. We believe we will continue to receive the support of advertisers and the carvers. We will be holding regular fundraisers and are hopeful about other revenue sources in the New Year.

Well, another year goes in the books. I think I can speak for most of us when I say-MERRY CHRISTMAS. It's good to see it come and for my aching back it's good to see it go. Jack

**Check us out online at:**  
[www.theccsg.com](http://www.theccsg.com)

**Rate the Events at:**  
[www.theccsg.com/rate.htm](http://www.theccsg.com/rate.htm)

**Nominate Officers at:**  
[www.theccsg.com/nominate.htm](http://www.theccsg.com/nominate.htm)

**The Cutting Edge**  
240 Frosty LN  
Selah, WA 98942  
509-697-8853  
ammy@charter.net  
Amy McEntire - Editor  
Jack McEntire - Coeditor

The Cascade Chainsaw Sculptors Guild exists to foster support for the art and craft of chainsaw carving by encouraging communication between carvers through every means possible, including newsletters, websites, forums, meetings, demonstrations, mutual support and the preservation of our history.



Carving by our president Steve Backus (placed 8th in Reedsport WA)

Hello fellow carvers and fans.

Another year draws to a close and we are reminded of how lucky we can be in this life. The chainsaw carving community, even with the unbelievable growth (internet, who saw that coming!) of the last ten years, is still a very small family, albeit often destructive, dysfunctional, and diverse. It is none the less a family.

Over the past couple of decades the Cascade Chainsaw Sculptors Guild has done some very decent things for a lot of carvers. It seemed to work best when the trouble that came to a carver coincided with an event that the Guild was involved with. We for sure can't pick when the hammer will fall. Sad things happen all year round, and we are not always able to do things when it would benefit the carver at the time of a mishap, but I tell you what folks, I have seen, and been involved with some good and decent, and positive actions -- auctions and fund raisers that helped out carvers when they needed it. This line of thinking has been regulated to the dust heap to some degree. We must return to taking

care of our own, charity begins at home and all that.

Forming committees and handing out the funds with an eye dropper did not seem to work very well. Not that some sort of committee {any volunteers?} should not exist to be able to dispense funds at the odd times of the year. I see some events being in a situation where if we have the need to raise the call to do some thing positive for a carver that has fallen on a real hard time, the timing of things would allow it to happen somewhat spontaneously. I would love to explore this avenue of self-help within our carving community. I believe it to be a good thing.

Here are a few of our past deeds that are often overshadowed by those whose only goal is, after ME! You first. In 1994 or 95, we sent Bob Lenholm of Lincoln City Oregon a hat full of cash after a large carving fell on him and crushed his skull. Charlie Mitchell of Olympia took it to him. I forget how much it was but that's not the point is it? In 1996 or 97, we sent Larry Jensen's wife a couple thousand dollars after he had passed away that July. As I recall, for those of you that have been there, as you enter Westport Washington you see a large whale with a baby about fifteen feet long in front of a motel. That whale was carved by Fred Bero. He said he would send half the money that it was auctioned for to Larry's wife, it sold for a little over \$2000, so Fred was responsible for half of our collective generosity, can't say enough good things about Fred.

At any rate, it's good to put a year under our belts and eyeball the magic eight ball for the path forward. So carve cool stuff, love the people in your circle, and forgive all your grudges before the New Year lands {they get real heavy if you carry your grudge too long} and remember that being nice and having fun is free..... Steve Backus... Have a Merry Christmas!

### Kunst mit Kettensägen



## Documentary of the Germany Carving Event is on DVD! \$15

By Michael Knüdel

Pictures, interviews and background information of an international event!

DVD is in German and English and must be played on your PC

Jamie Doeren of [www.chainsawsculpture.com](http://www.chainsawsculpture.com)

[jdoeren@bayland.net](mailto:jdoeren@bayland.net)

call 888-895-6471



# The Alphabet, from "Seven Easy Pieces, a collection of chainsaw carvings you can do in less than thirty minutes," by Mike McVay

When I was a little fella, I had a science teacher who taught a terrific course about sea life. He kept lots of fish and snails, crabs and fish, all doing their best to liven up the day in a huge aquarium. Learning the names of that menagerie was sometimes a task, but he always seemed to make it simpler. "Remember this," he'd say, "and you'll remember the names.", and he would give us a mnemonic that always seemed to work, like SCUPS. The first S stood for Sea and all the other letters followed..Sea Cucumber, Sea Urchin, Sea Pen and Sea Snake.

He had a flair for that. I don't have that talent, so I have to explain everything, over and over. Endlessly, alas, unless I can draw it. Then whatever I'm droning on about will usually become clear. So if you find me rambling on about something and you don't understand, ask me to draw you a picture. You'll be glad you did. Like now.

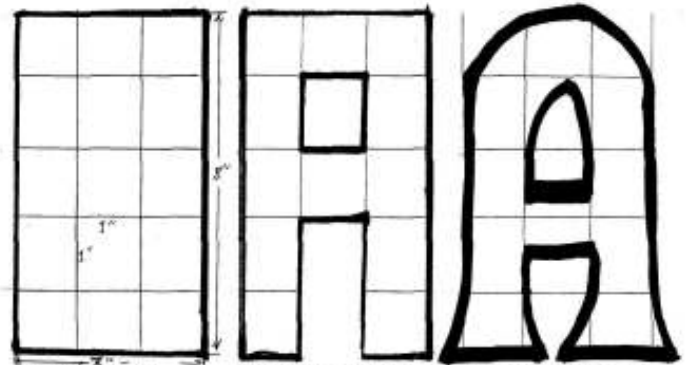
The alphabet is a fairly straight-forward bunch of lines that can be put together to make words. By the way, if you don't think you speak Greek, guess what? The word comes from the first two letters of the Greek, alpha + beta. If you're a woodcarver, however, that usually translates into people's names carved on boards for the fronts of their houses. I get a lot of work every year carving name signs. In fact my next article will be on the layout and carving of one.

In these illustrations, I've laid out a basic grid for drawing letters that can be carved with a chainsaw. The purpose of the grid is to give you a feeling for the uniformity and proportion of the letters. Get a handle on this and you'll be able to develop all sorts of different fonts. They can be tall, short, square, round, bold, fine, italic, back-slanted, straight, intarsia or cameo.

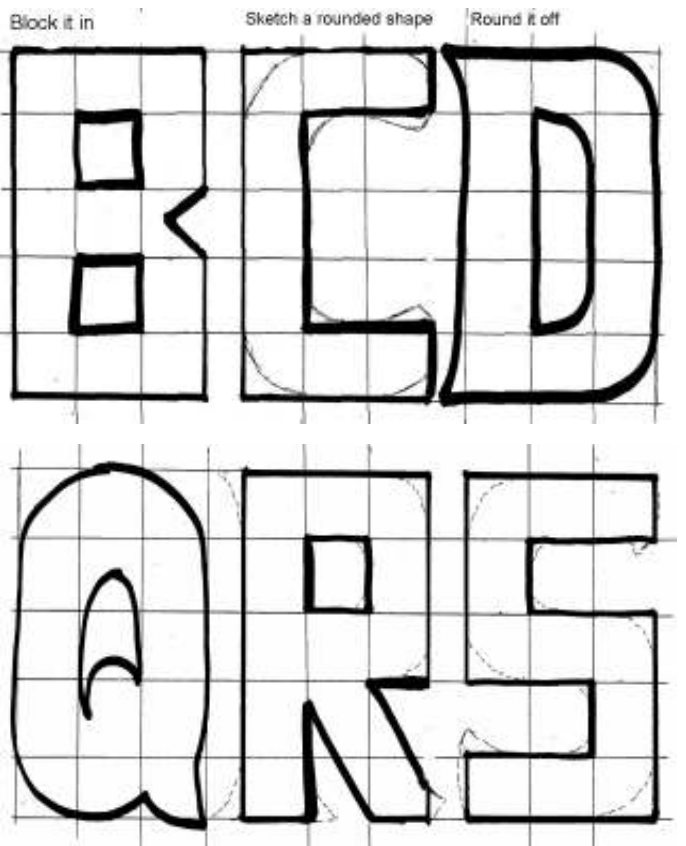
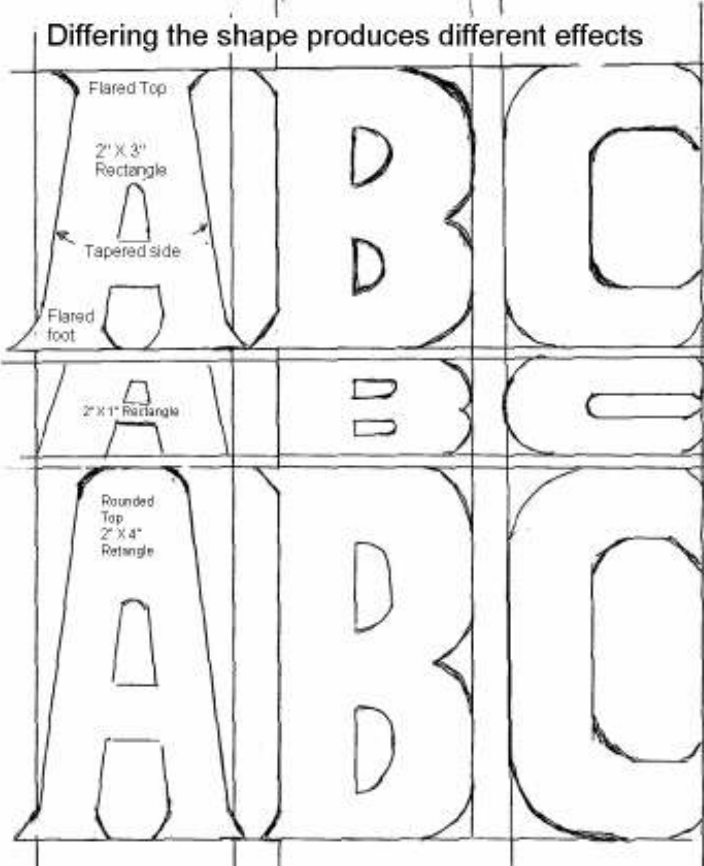
The shapes with the grid are geometric and dull, but if you add sweeps and flares they liven up pretty well. Plus, when you add sweeping serifs to letters, you get away from 90-degree corners which can be difficult to execute.

It takes a little practice, but once you've mastered the sense of proportion gained from the grid method, you'll be inventing all sorts of alphabets. We don't have room in the printed form of the CUTTING EDGE NEWSLETTER for all the letters (and numbers), but I think you can get an idea from these samples. As for the rest, I hope to have them all posted on our CCSG website soon.

Happy Holidays everyone, Mike McVay



To illustrate the letters, I've used a 3" X 5" Rectangle with a 1" Grid, but it can be any shape or size. Find the letter in the grid and block it in. Round the top and flare the feet to give it some interest.





(Continued from page 1) *The Female Form as 'Art'!!* story and pictures by Angela Polglaze

amongst the general madness of a competitive environment, and all while carving under the attentive gaze of an awestruck audience. Phew!! The pressure is on.

Interestingly enough, upon viewing these beautiful works together, I was struck with the realization that none would readily qualify as a winner for the annual 'Cheesy



Ricardo Villeras ... Equador  
3<sup>rd</sup> place female form created over 2 and a half days in August at the Wohlmirstedt event in Germany.



Carving by Trace Britenfelt of Wa.  
Mermaid created over 15 hours in 06/2007 at Ocean Shores Sand to Sawdust Festival in Washington



'Chick Challenge' which originally sources much of its inspiration from the colorful and vibrant Pop Art era, and celebrates the memory of the deliberately naughty and often provocative era of the 50's Cheese-cake Pin Up Girl. Both eras simply represent yet more of the many and varied aspects of the female form as depicted throughout the history of art.

Moving into its 5<sup>th</sup> year, the deadline for the 'Cheesy Chick Challenge 2008' is April 1<sup>st</sup> with 4 jpeg images to be emailed to me at [angiechainsaw-chick@yahoo.com.au](mailto:angiechainsaw-chick@yahoo.com.au) on or before that date. In an exciting new development, 2008 sees the introduction of the eagerly anticipated 'Golden Cheese Award', and the 'Golden Cheese Trophy' (being seen here for the first time), and all participants will receive a 'Certificate of Cheese' in grateful acknowledgement of their creative efforts.. And don't forget, a splash of color when entering the 'Cheesy Chick Challenge' never goes astray.

The 19<sup>th</sup> century writer Charles Blanc identified color with femininity declaring that, "color is often associated with the sensual, eroticism even", and I am of the firm belief that a bit of thoughtfully selected color make the girls sing ... so to speak.

Be creative, be daring, and break out of the log.

Your imagination is your only limitation.

Exciting huh!!

Carving carved by Angela Polglaze of Melbourne Australia won Peoples Choice created in 9/2007 over 2 and a half days in Hope, Canada



Brian Ruth ... Pennsylvania USA  
1<sup>st</sup> place piece of woman picking grapes created over 2 and a half days in August at the Wohlmirstedt event in Germany.



In closing, I want to send out a heartfelt thanks to all of you that made my year of 2007 so fantastic (you know who you are), a magical adventure indeed. In 6 years of traveling the world carving at events alongside vast numbers of amazing artists, I am still incredibly impressed at how the quality of the artwork continues to improve ... it's phenomenal ... and the imagination of the artists behind the art works has exploded as carvers continually explore the limits of what is possible.

I have no idea of the number of individual artists I have encountered over the years, but I do know that every one of them is hugely inspiring to me in so many ways. That said, as grateful as I might be for all the priceless kinship and creative inspiration my fellow carvers instill in me, I can never give enough thanks to the brave souls that work so tirelessly to make these awesome events happen in the first place ... it's incredible ... a really BIG thank-you to you all !! And in anticipation of the coming year and all of the adventures that loom ... good luck for the holiday season ... carve, carve, carve ... and have fun!!!

Take care all ... Angie XXX



Uschi Elias ... Germany  
Abstracted female form created over 2 and a half days in October at Fasnacarving in Vaassen Holland.



'Golden Cheese Trophy'  
Trophy to be awarded for the 2008 Cheesy Chick Challenge winner.



Alexander Ivanov ... Bulgaria  
Seated female form created over 3 days in September at the English Open, Tatton Park, England.



Natasha Chistyakova, Russia  
Classical seated female form created over 2 days in September at the Steinbeck event in Germany



Simon Hedger ... Wales UK  
Dancing couple created over 3 days in September at the English Open, Tatton Park, England.



## CHAINSAW SCULPTURE COMPETITIONS Part 1: THE ROLE OF THE JUDGE

(material from "The Green Book", © Susan Miller 2005) -- by Susan Miller

This is one of a series of articles about chainsaw competitions. It is based on many years of the guild members' experiences with competitions, judging, participating, and promoting. We have had many discussions about what works and what does not, and we are dedicated to making events a good experience for carvers everywhere. We invite comments and suggestions, either by letters to the editor or on our guild forum.

Well, here we are, another year is coming to an end, and there will be contests coming up during the next year. Of course, no one is more important to a show than the carvers, but if the event is a competition, then we all want to have good judges. Right? So why and how do we do that?

### PURPOSE OF JUDGING: What are we trying to accomplish?

We want to recognize excellence in carving with awards and prizes for the carver.

We want to improve the standard of chainsaw sculpture by encouraging and rewarding desirable features in the art form.

We want to inspire and challenge carvers to do their best work.

We want to raise the public awareness and knowledge of chainsaw sculpture.

### Qualifications: What should we look for in a judge?

#### **Integrity, fairness, and a helpful attitude.**

It is an honor to be chosen as a judge, and the job must be taken seriously. The judge must show up in time for a meeting with the other judges, be able and willing to give each carving consideration, to discuss his or her decisions with the other judges and to answer questions carvers may have in a forthright manner.

Judges chosen must be respected for good character and lack of bias.

The competent and fair judge will not be influenced by knowing or being related to a carver.

The judge must be above suspicion of personal financial gain resulting from voting for a particular carving.

The judge should also realize that each carver has worked at a breathtaking pace under a certain amount of stress, and be able to provide encouraging words or helpful ideas for improvement to every participant.

#### **Experience as a chainsaw carver.**

The experienced carver knows what is possible to achieve with a given piece of wood in the allotted time.

He or she knows what is difficult to accomplish technically, in terms of texturing and detailing the carving, in terms of making cuts that are difficult. (Such as hollowed forms, raised details, and interlocking shapes)

*(Continued on page 7)*

sprockets \* chain \* chainsaws \* carving packages \* carving bars  
shop supplies \* safety equipment \* carving tools \* clothing \* books

[www.chainsawsculpture.com](http://www.chainsawsculpture.com)

Tools  
Tips  
Accessories  
and  
Information  
for  
Chainsaw  
Carvers

Toll Free 1-888-895-6471 International 920-826-5750

The advertisement features a central image of a person in a white t-shirt with a chainsaw logo, holding a red chainsaw. The background is a bright sky with clouds. A large, stylized chainsaw blade graphic is overlaid on the image, containing the website URL. To the right, a vertical list of services is provided. At the bottom, there are three small inset photos showing chainsaw carving in progress. The entire advertisement is set against a green background.

The experienced carver values and understands the qualities and limitations of the material, and is able to see when the carver uses these qualities, (such as grain directions and strength) to create an excellent carving.

**Knowledge of basic sculpture principles, terminology, and history.**

It is said that we know what we like. But we also tend to like what we know, and this is true when we look at works of art.

A familiarity with sculptural principles will enable the judge to critique sculptural forms with an eye toward formal elements of design, expressiveness and intent. A grasp of the basic terminology makes it possible for the judge to communicate his observations. A wide exposure to historical sculpture opens our minds to the possibilities of style. Familiarity with the Chainsaw sculpture that is out there will allow the judge to detect original or innovative approaches to a carving she/he is judging.

**Confidence and ability to discuss and explain one's decisions.**

Can the judge speak up and defend his or her ideas?

Can the judge listen to what other judges are saying? Can he or she refrain from being overbearing?

Is the judge able to constructively explain to the disappointed carver why the score given wasn't higher and to encourage improvement?

All of these abilities are learned skills, and may be easier for some people than for others, but are a big part of being an effective judge.

All this sounds pretty straightforward and based on common sense, but there are some challenges. Transportation or lodging expenses are factors, scheduling can be a problem, and sometimes an otherwise excellent artist knows little about wood, or an excellent carver does not have expertise in a variety of artistic styles. Sometimes it is politically useful to have an important sponsor or town official be a part of the show, (but it is certainly too bad if that means poor judging!)

I see it as the promoter's job to realize the importance of getting good judges and to schedule time for the judges to do their job. The head judge also has a role to play. He or she must see to it that all the judges understand the criteria and scoring system. The head judge needs to be organized enough to work within the time allotted.

**SOME CHOICES:** There is no perfect and right way to run a competition. We learn through experimentation how to make each event better. Here are some choices to be worked out among the judges and event promoters:

- Shall judges examine carvings as a group or as individuals?
- Can different competitions have different judging criteria? If so, which criteria should be universal and which should be up to the organizer?
- Shall we include "The Wow Factor" as a judge's bonus?

Certainly there are other choices, and many ideas to address the challenges of obtaining or training qualified judges. The next article in this series will be about the criteria that the CCSG has adopted for contests. Until then Happy carving!

## Upcoming Events

The events listed here are offered as a free service and are not endorsed by the CCSG. If you would like to list an event please contact the Cutting Edge at 240 Frosty LN, Selah, WA 98942, 509-697-8853, ammy@charter.net

### February 16<sup>th</sup> & 17<sup>th</sup> Eagle River, Wisconsin

#### First National Bank

Klondike Days

Contact:

Terry Hess

4737 Dyer Rd.

Eagle River, WI 54521

(715) 477-0874 evenings

Kristin.hess3@verizon.net

### February 23rd - March 2nd Ridgway, Pennsylvania

Appalachian Art Studio presents:

Ridgway Chainsaw Carvers Rendezvous

Contact:

www.chainsawrendezvous.org

Rick and Liz Boni

Appalachian Arts Studio

Ridgway, Pa

814-722-0400

### March 4th-9th Abrams, WI

Carve-A-Palooza At Jamie's Studio

Contact:

Jamie Doeren

(Studio)

3013 Cedar Lane

Abrams, WI 54101

(920) 826-5750

## Cascade Chainsaw Sculptors Guild

### Membership Application for 2008

Online membership is free for 2008 but, if you want a bumper sticker and/or your newsletter mailed dues are \$20 (US) or \$25 (foreign) for the year payable to the CCSG. We gladly accept and encourage donations too!

I would like to receive my newsletter in the mail

I would like to receive my newsletter online

Name

Address

City

State

Zip

Phone

Email

Send this form to:

CCSG Membership  
240 Frosty LN  
Selah, WA 98942

## The Cutting Edge

240 Frosty LN  
Selah, WA 98942

## Carvers on the Edge

### Advertise in the Cutting Edge!

Full Page:	\$200
Half Page:	\$100
Quarter Page:	\$50
Business Card:	\$25

**Classifieds: \$10 per 20 words**

**We can design your AD or use your own design. Contact: [ammy@charter.net](mailto:ammy@charter.net) for more information.**

### **Tales of an International Starving Artist -- England and Scotland**

*by Bruce Thor*

It's good to be at sea again. We arrive in England only to be held because we're a group of international carvers (Australia, Japan, Germany, Austria and one hippy American) with a truckload of saws. Thanks to Angie for talking us through. Michael (bless his soul) then drives us another 6 to 7 hours across England to Tatton Park where we are greeted by Dennis and Shirley and shown our caravans to sleep in.

The morning finds us in another beautiful park with a good selection of logs to choose from. The local guy, Tim Burgess, shows us the town and I find out why they don't paint their carvings overseas. Spray paint costs 6 pounds a can (about 12 bucks each) Yowsers! It works to my advantage as I create my first fully round human figure standing on his own 2 feet. Everyone created great works of art and it was the best show over there this year, as the rain had ruined most of them.

We got to find out how tough it is to be a judge, as the judging was done by the carvers themselves, very tough. At night we gathered around the campfire again to celebrate life, creation and reconnect with old friends and new. Vagz did an amazing job as MC, providing hospitality, and as auctioneer. Many thanks to all that made the show possible, including Haggis (the cider man), for helping me avoid a public meltdown as the last few hours ticked away and I needed power tools to sand. It all worked out and once again we had to say goodbye to good friends and the core group of carvers with whom I'd just done 3 European shows. The hardest part is always saying goodbye.

Next, I find myself being hijacked by a heathen anarchist as my tour guide to the next show in Carrbridge, Scotland. I see unforgettable sights, yep more castles and purple mountains covered in heather made even cooler thru purple shades. We arrive in Carrbridge and meet up with good friends (hello Nansi, Kevin, Katumba, Joe King and Peter) and meet new ones (Euan, Andy, Gavin). We were put up and fed at the Carrbridge Hotel. Boy am I getting spoiled. At breakfast, before our 4 hour chainsaw only show, it comes to me what to carve, the bridge, the 1700 bridge that still stands and the town is named for. Before we're led into the field by bag pipes, I see a coffee mug with a picture of the bridge on it and buy it for reference. (Thanks Kevin) It turns out I may be the first to carve it, as the local carvers say it takes an American to come over and carve our local landmark, woohoo! That night we celebrate, dance traditional Scottish dances and Vagz once again gets up on stage to join the band and jam. Simon follows with his masterful guitar playing and a good time was had by all. Thanks to Peter, Gavin and Carrbridge for a great time. I'm reminded of Joe and me walking down the street saying how could it get any better. After many goodbyes we go back to England along the scenic route for more castling, and Katumba looking for book stores to buy westerns in. Everyone has their souvenirs; I like rocks, seashells and t-shirts. With thanks to my heathen tour guide I'm dropped off at the airport for my flight home. On arrival I find my dad having crab legs and ice cream for breakfast and my cat Mary missing me. All is well! I wish again to thank all and say if I didn't mention you not to worry, all the juicy details will come out in the book version. Keep Smiling and Carve Safe, Bruce Thor.



The Queens Bridge in Scotland picture taken from [www.armin-grewe.com/holiday/scotland2005summer/queens-view.htm](http://www.armin-grewe.com/holiday/scotland2005summer/queens-view.htm)



Please fill out this form and mail it to:  
**CCSG**  
**240 Frosty LN**  
**Selah WA 98942**  
 You may also rate the Events Online at: [www.theccsg.com/rate.htm](http://www.theccsg.com/rate.htm)

**Cascade Chainsaw Sculptors Guild – Rate the Events Questionnaire**

<b>Name of the Event</b>			
<b>Wood Quality</b>		<b>Wood Size</b>	
Main Piece:	<input type="checkbox"/> Excellent <input type="checkbox"/> Good <input type="checkbox"/> Fair <input type="checkbox"/> Poor	Main Piece:	<input type="checkbox"/> Large <input type="checkbox"/> Medium <input type="checkbox"/> Small
Quick Carve:	<input type="checkbox"/> Excellent <input type="checkbox"/> Good <input type="checkbox"/> Fair <input type="checkbox"/> Poor	Quick Carve:	<input type="checkbox"/> Large <input type="checkbox"/> Medium <input type="checkbox"/> Small
<b>Wood Uniformity</b>		<b>Meals Provided</b>	
Main Piece:	<input type="checkbox"/> Equal <input type="checkbox"/> Not Equal	<input type="checkbox"/> Yes <input type="checkbox"/> No	<b>Do you feel there was good publicity prior to and during the event?</b>
Quick Carve:	<input type="checkbox"/> Equal <input type="checkbox"/> Not Equal	<input type="checkbox"/> Breakfast <input type="checkbox"/> Lunch <input type="checkbox"/> Dinner	
<b>Rooms/Accommodations</b>		<b>Onsite Camping</b>	
<input type="checkbox"/> Provided <input type="checkbox"/> Not Provided <input type="checkbox"/> Discounted Other: _____		<input type="checkbox"/> Allowed <input type="checkbox"/> Not Allowed	
<b>Onsite Sales</b>		<input type="checkbox"/> Allowed <input type="checkbox"/> Not Allowed	
<b>Parking Near to Carving Area</b>		<b>Tools Allowed</b>	
<input type="checkbox"/> Yes <input type="checkbox"/> No		<input type="checkbox"/> All Tools <input type="checkbox"/> Chainsaw Only	
<b>Paid to participate in Event</b>		<b>Electricity Provided</b>	
<input type="checkbox"/> Yes <input type="checkbox"/> No		<input type="checkbox"/> Yes <input type="checkbox"/> No	
<b>Able to Keep Main Piece?</b>		<b>Able to Keep Quick Carve</b>	
<input type="checkbox"/> Yes <input type="checkbox"/> No		<input type="checkbox"/> Yes <input type="checkbox"/> No <input type="checkbox"/> Auctioned _____ % of sale to carver? <input type="checkbox"/> Given to event for participation	
If no, what happen with piece? _____			
<b>Was there a Setup Crew</b>		<b>Was there a Cleanup Crew</b>	
<input type="checkbox"/> Yes <input type="checkbox"/> No <input type="checkbox"/> Don't know		<input type="checkbox"/> Yes <input type="checkbox"/> No <input type="checkbox"/> Don't know	
<b>Hospitality of City:</b>		<b>Rate the Setup of Event</b>	
<input type="checkbox"/> Excellent <input type="checkbox"/> Good <input type="checkbox"/> Fair <input type="checkbox"/> Poor		<input type="checkbox"/> Excellent <input type="checkbox"/> Good <input type="checkbox"/> Fair <input type="checkbox"/> Poor	
<b>Bathrooms Available (including port-a-potty's)</b>		<b>Was Security Provided</b>	
<input type="checkbox"/> Yes <input type="checkbox"/> No <input type="checkbox"/> Don't know		<input type="checkbox"/> Yes <input type="checkbox"/> No <input type="checkbox"/> Don't know	
<b>Carving Related Classes Offered</b>		<b>"Nightlife" Activities Available After Show?</b>	
<input type="checkbox"/> Yes <input type="checkbox"/> No <input type="checkbox"/> Don't know		<input type="checkbox"/> Yes <input type="checkbox"/> No <input type="checkbox"/> Don't know	
<b>Safety Gear Required</b>		<b>Fueling Stations Provided</b>	
<input type="checkbox"/> Yes <input type="checkbox"/> No <input type="checkbox"/> Don't know		<input type="checkbox"/> Yes <input type="checkbox"/> No <input type="checkbox"/> Don't know	
<b>Trophies, Plaques and Ribbons Awarded</b>		<b>Quality of Judging?</b>	
<input type="checkbox"/> Yes <input type="checkbox"/> No <input type="checkbox"/> Don't know		<input type="checkbox"/> Excellent <input type="checkbox"/> Good <input type="checkbox"/> Fair <input type="checkbox"/> Poor	
<b>Perks Offered (other than prizes)</b>		<b>Quality of Prizes</b>	
<input type="checkbox"/> T-shirts <input type="checkbox"/> Hats <input type="checkbox"/> Tools Other: _____		<input type="checkbox"/> Excellent <input type="checkbox"/> Good <input type="checkbox"/> Fair <input type="checkbox"/> Poor	

If you would like to comment on anything else not listed on the questionnaire please do so briefly here:

**TIME TO NOMINATE NEW OFFICERS**

It is time to nominate a new President, a new Vice President, and several new board members. Our secretary and treasurer are appointed positions.

Officers should be people of good character who see beyond their own best interests and can further the art of chainsaw carving for all carvers, who are organized and enthusiastic, and who love the world of chainsaw art. Nominees should be people who are familiar with the world of chainsaw carving and who have shown a willingness and ability to get involved in a positive way.

Please send in your nomination for the positions listed below to:

CCSG  
240 Frosty LN  
Selah WA 98942

You may also make your nominations online at: [www.theccsg.com/nominate.htm](http://www.theccsg.com/nominate.htm)

**NOMINATION OF OFFICERS**

President: \_\_\_\_\_

Vice President: \_\_\_\_\_

Board Member: \_\_\_\_\_

Board Member: \_\_\_\_\_

Board Member: \_\_\_\_\_

Nominated by: \_\_\_\_\_

Address, email or phone: \_\_\_\_\_